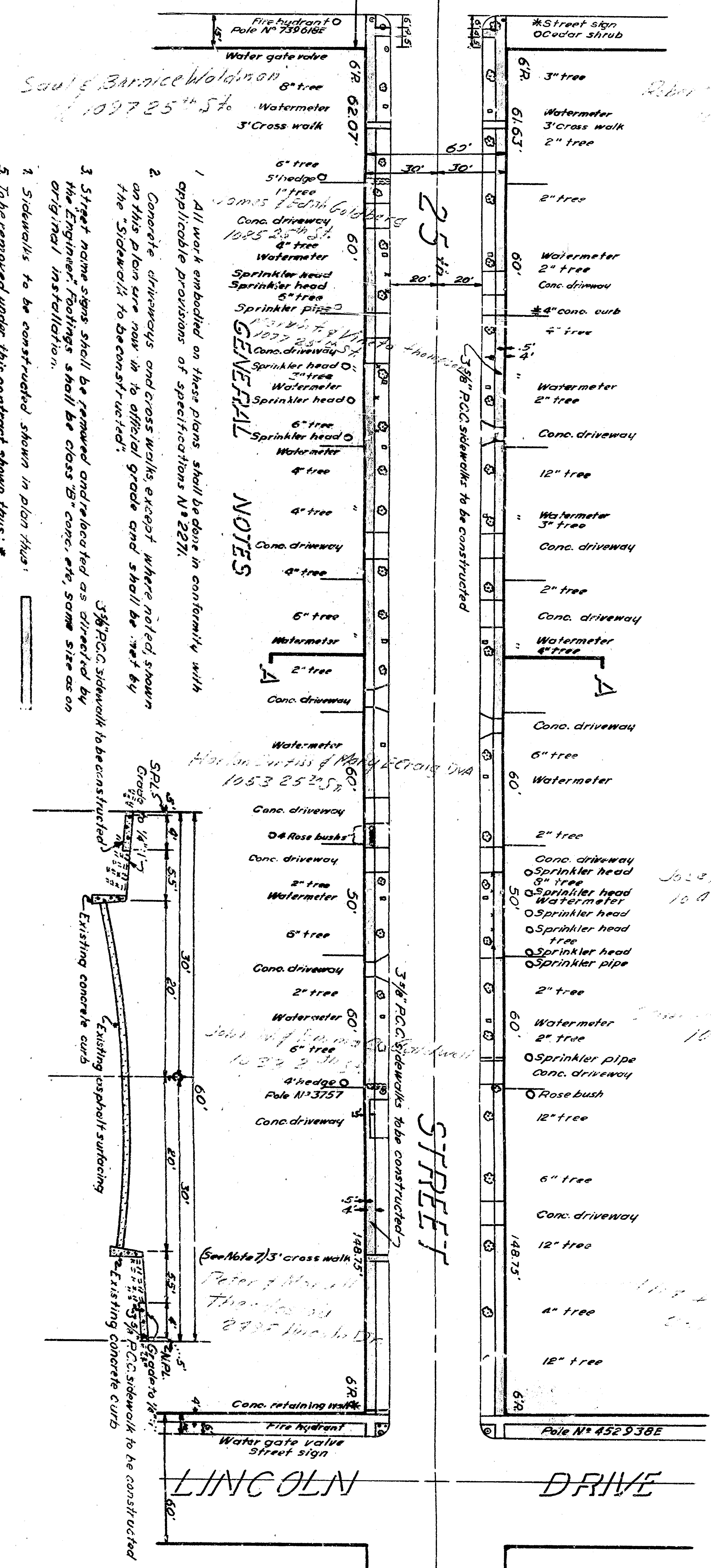
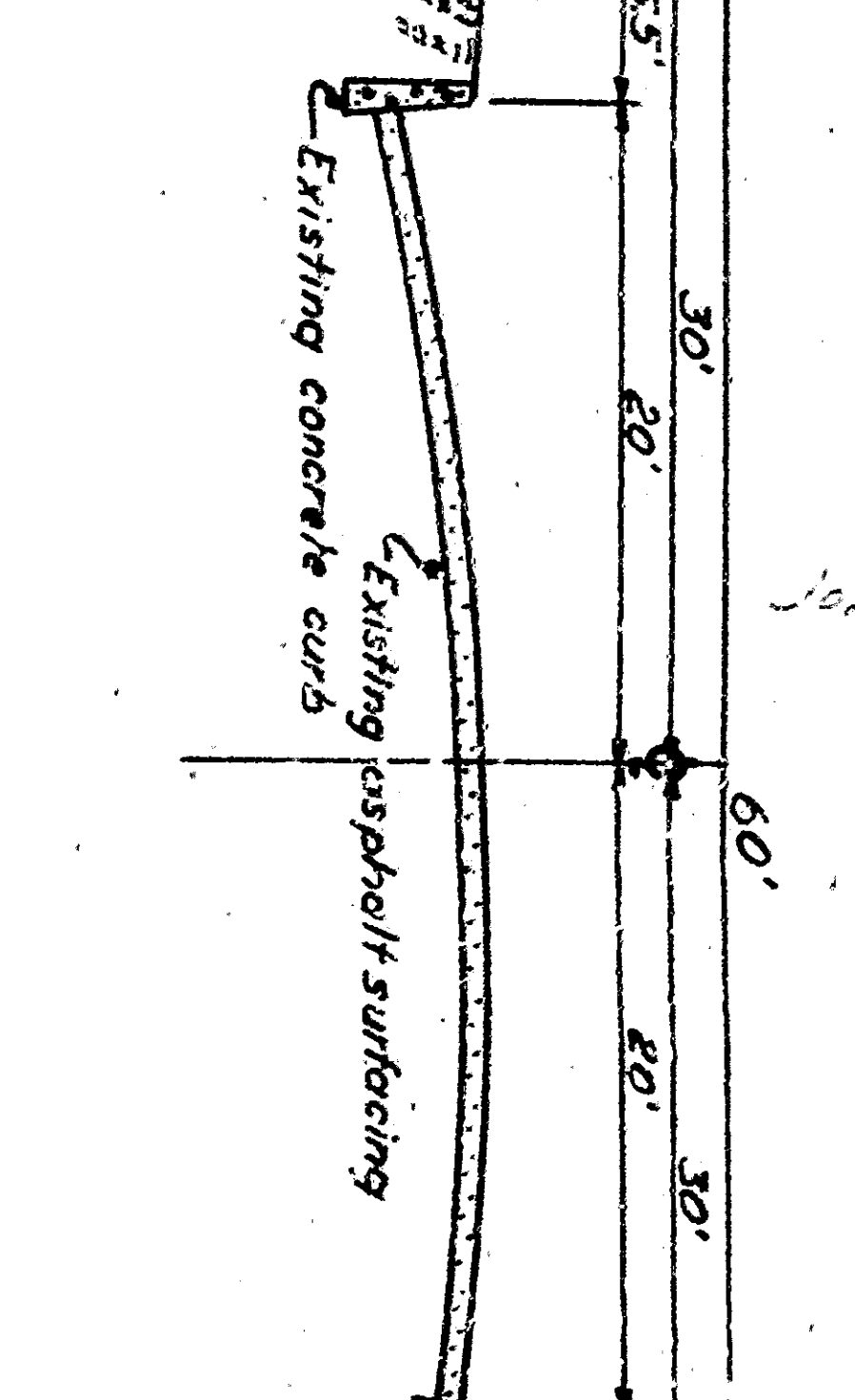


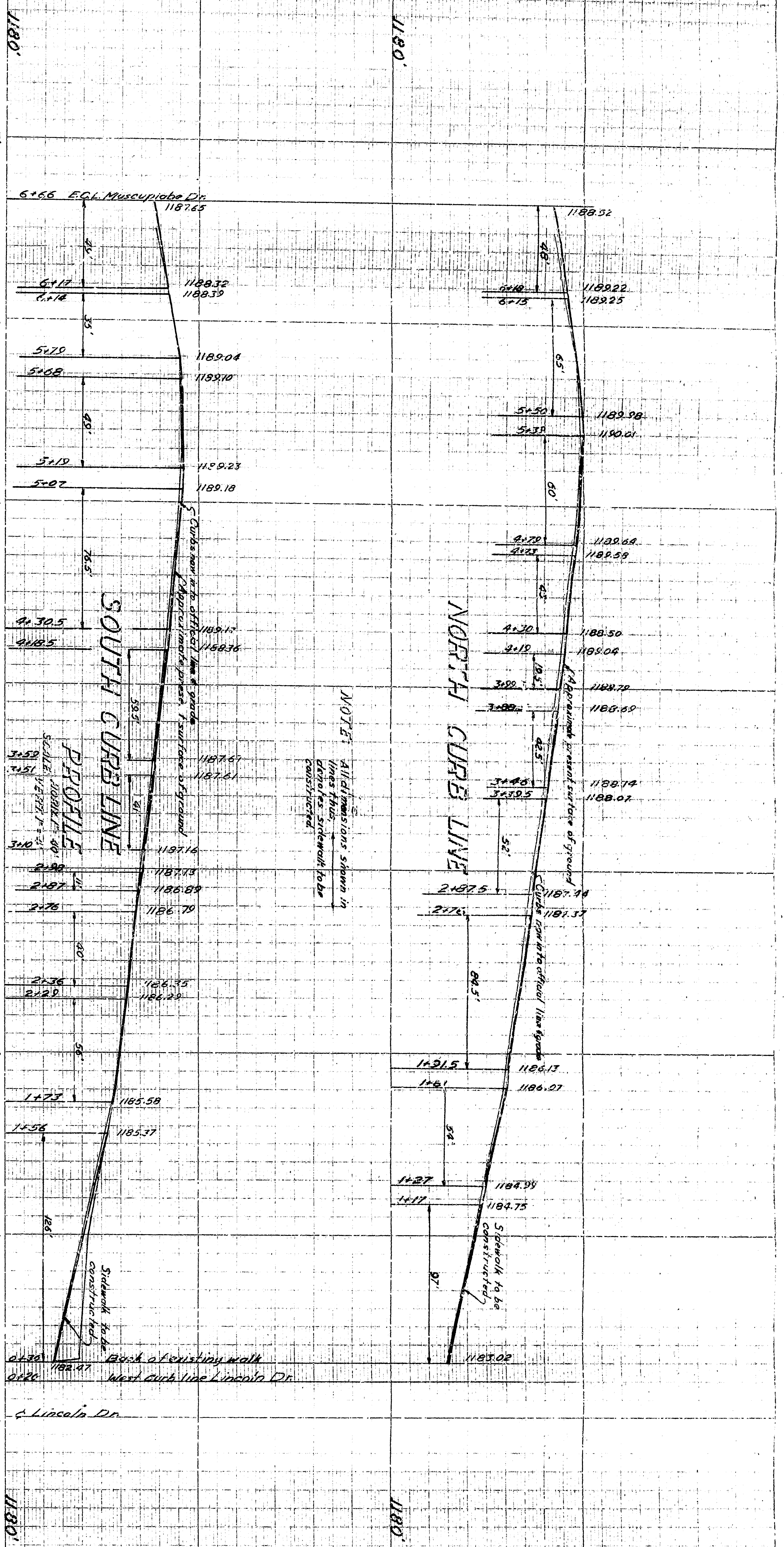
# MUSCUIPIABE DRIVE



PLAN SCALE 1"=40'



TYPICAL SECTION A-A SCALE 1/2"=1'-0"



PROFILE SCALE 1"=40'

DEPARTMENT OF PUBLIC WORKS  
CITY OF LINCOLN, NEBRASKA

ENGINEER  
JOHN W. JOHNSON

DESIGNED BY  
C.L.C. 2/24/57

CHECKED BY  
G.S. 1/1/57

APPROVED BY  
C.L.C. 2/24/57

REGISTERED PROFESSIONAL ENGINEER  
NO. 1049

REGISTERED PROFESSIONAL ENGINEER  
NO. 1049

REGISTERED PROFESSIONAL ENGINEER  
NO. 1049

REGISTERED PROFESSIONAL ENGINEER  
NO. 1049

REGISTERED PROFESSIONAL ENGINEER  
NO. 1049

REGISTERED PROFESSIONAL ENGINEER  
NO. 1049

REGISTERED PROFESSIONAL ENGINEER  
NO. 1049

REGISTERED PROFESSIONAL ENGINEER  
NO. 1049

REGISTERED PROFESSIONAL ENGINEER  
NO. 1049

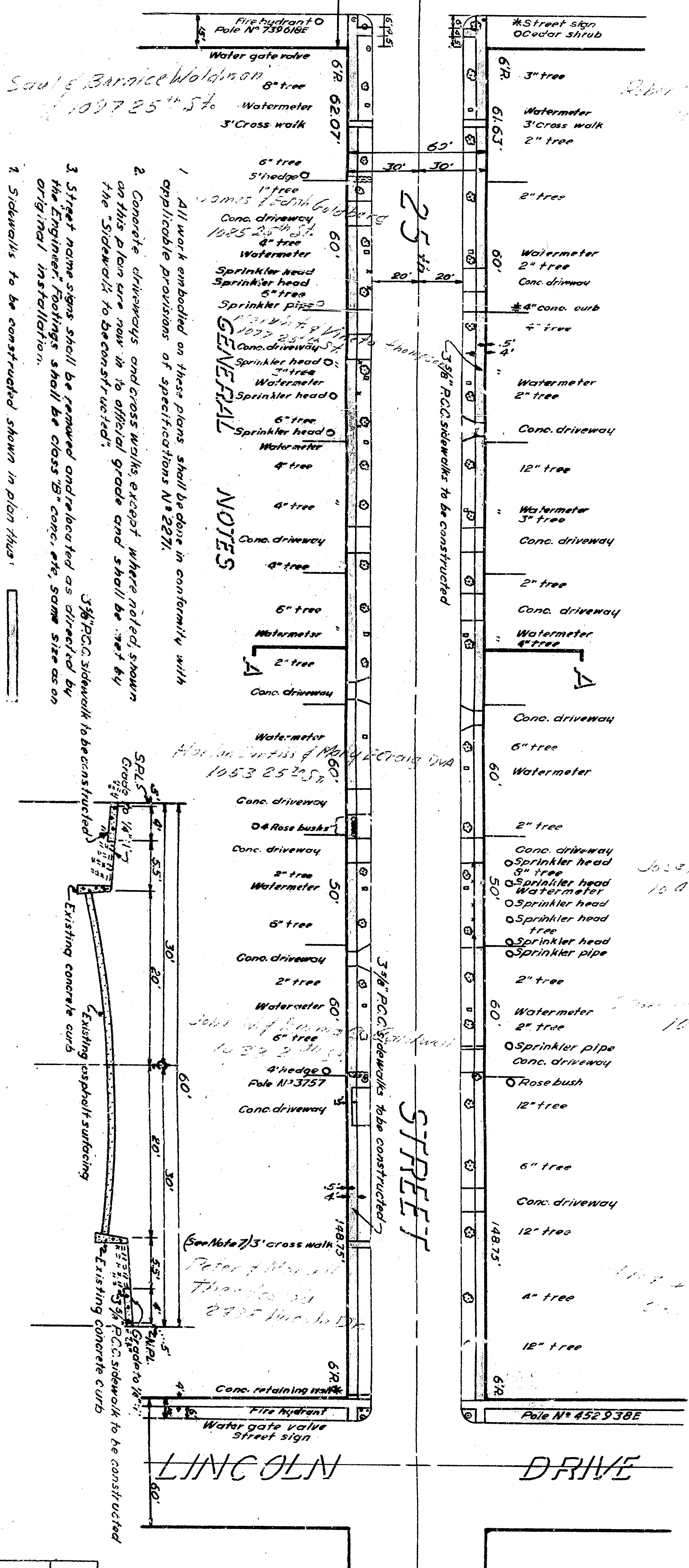
REGISTERED PROFESSIONAL ENGINEER  
NO. 1049

REGISTERED PROFESSIONAL ENGINEER  
NO. 1049

REGISTERED PROFESSIONAL ENGINEER  
NO. 1049

REGISTERED PROFESSIONAL ENGINEER  
NO. 1049

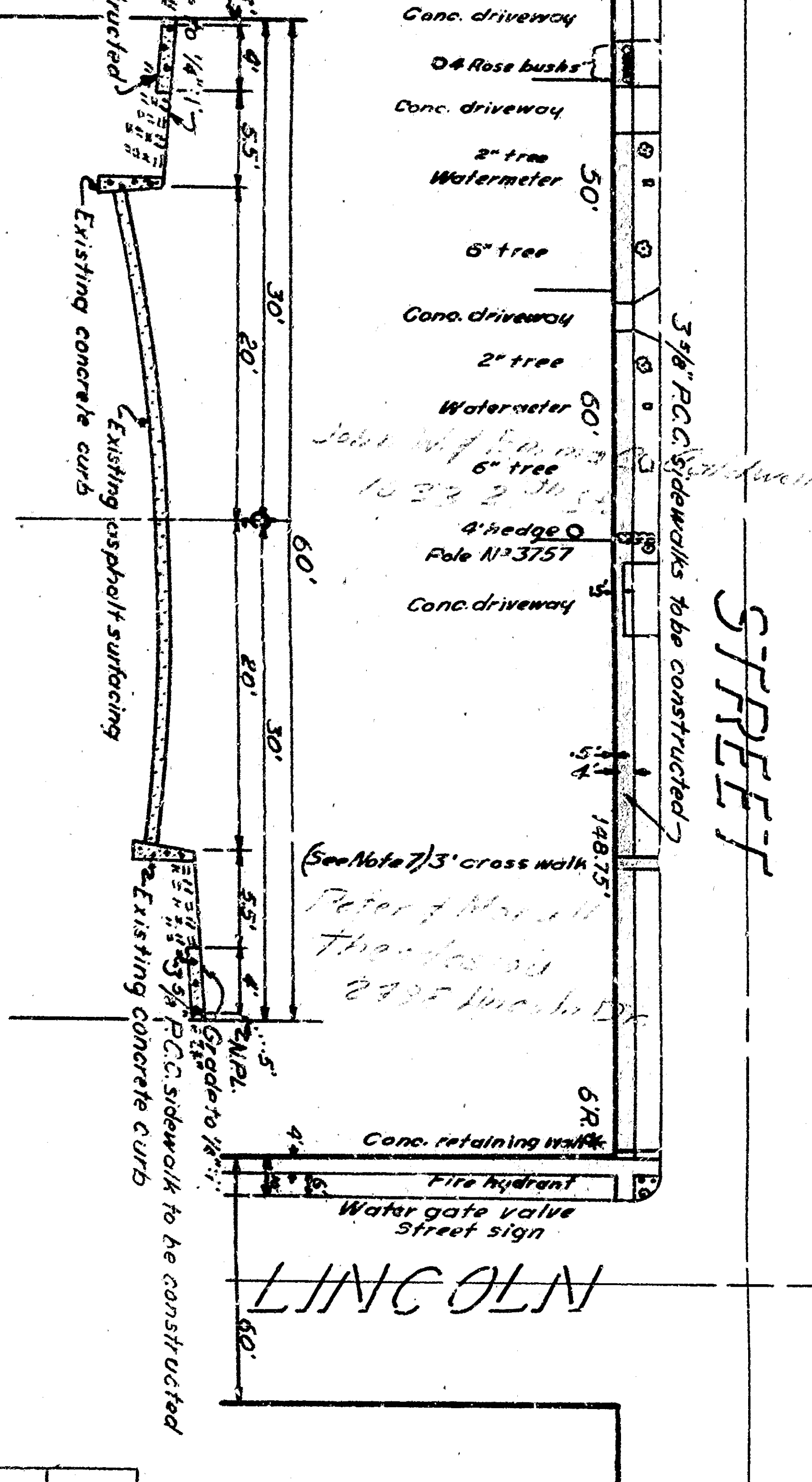
# MUSCUIPIABE DRIVE



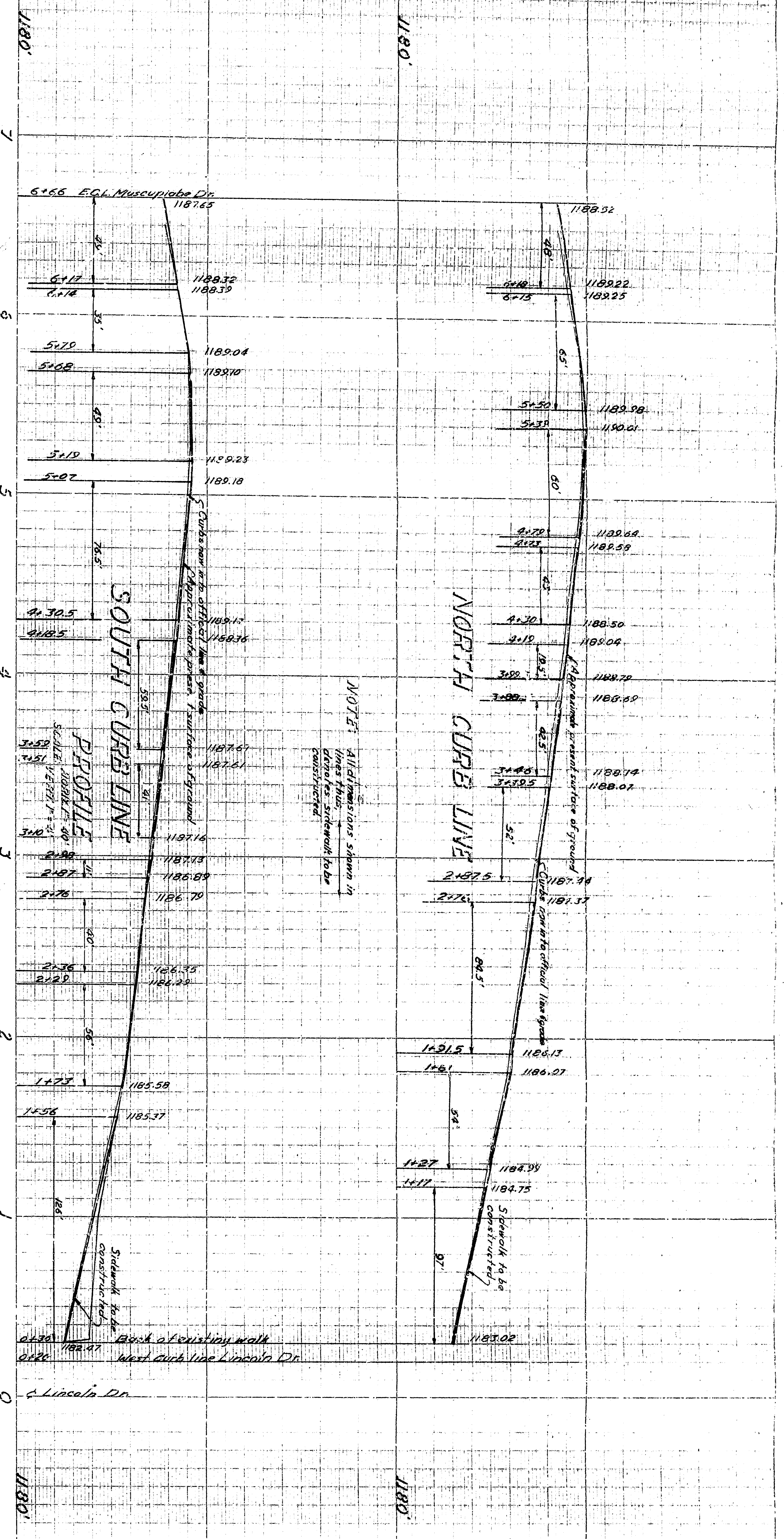
### GENERAL NOTES

- All work to be done in conformity with applicable provisions of specifications N° 227.
- Complete driveway and crosswalks except where noted, remove on other forms of concrete and shall be set by original installation.
- Street name signs shall be removed and replaced by original installation.
- Sidewalks to be constructed shown in plan view.
- To be removed under this contract shown thus: \*
- To be removed by others shown thus: \*
- Cross work on this plan of 25th St shall be removed and replaced to original grade.

### TYPICAL SECTION



### PLAN SCALE 1\"/>



**BENCH MARK**  
Monk & Lincoln Drive and 25th Street  
Elev 102.13'

DEPARTMENT OF PUBLIC WORKS  
CITY OF BARTON

JOHN W. JOHNSON  
ENGINEER

84-224  
25th ST LINCOLN DR to MUSCUIPIABE DR  
SIDEWALKS

APPROVED BY: [Signature]  
DATE: 11/28/00

DESIGNED BY: [Signature]  
CHECKED BY: [Signature]